




Guilford Center Village Center


Town of Guilford, Vermont


 Village Center District


Parcel use:


 Public/Institutional


 Commercial

 Mixed Use

 Residential

 Commercial building

 Mixed Use building

 Public/Institutional building


 Residential building

 Photo location

aerial photo date 2011

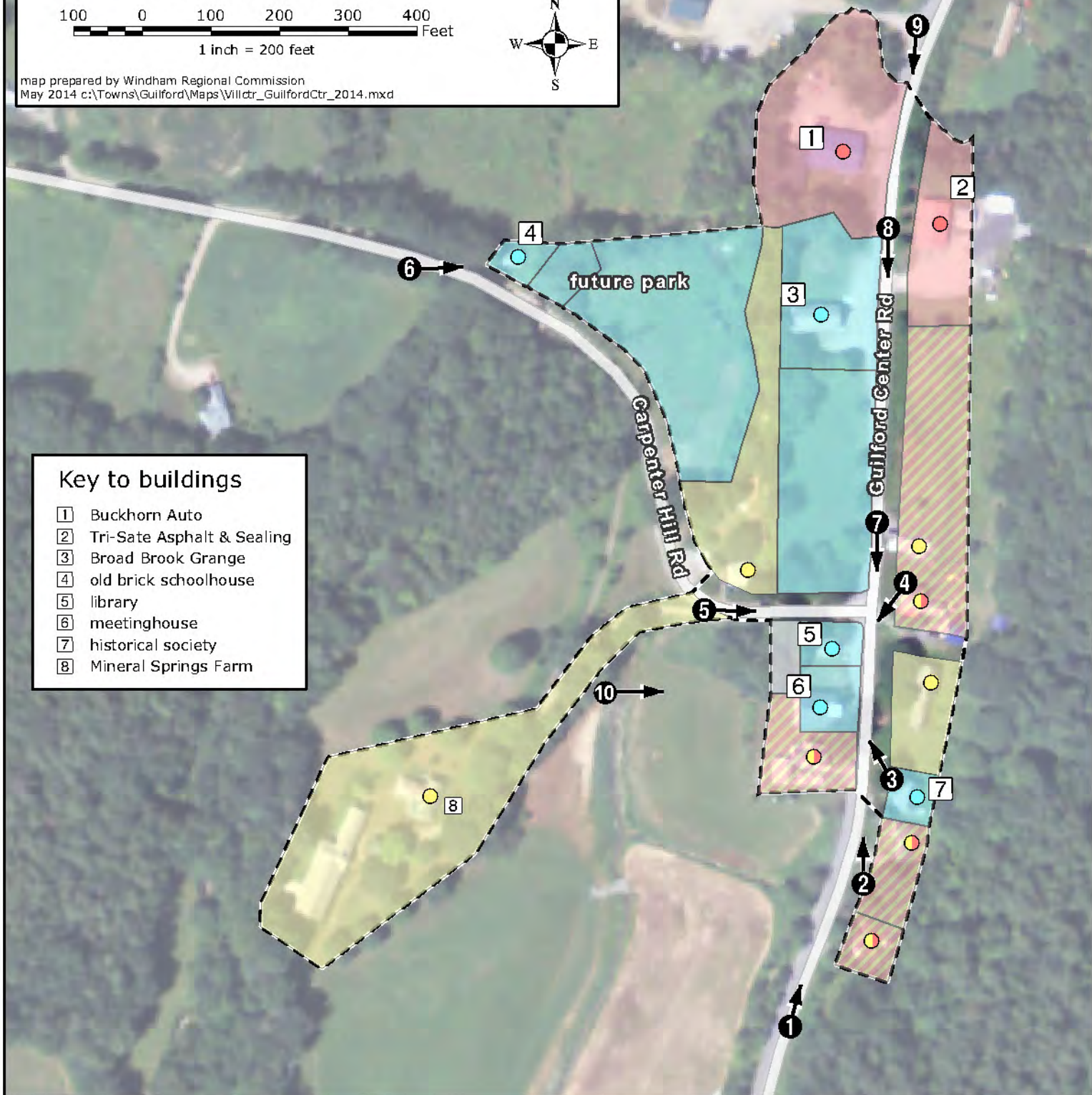
100 0 100 200 300 400 Feet

1 inch = 200 feet



map prepared by Windham Regional Commission
May 2014 c:\Towns\Guilford\Maps\Villctr_GuilfordCtr_2014.mxd

Board Approved
05-19-2014



Key to buildings

- 1 Buckhorn Auto
- 2 Tri-Sate Asphalt & Sealing
- 3 Broad Brook Grange
- 4 old brick schoolhouse
- 5 library
- 6 meetinghouse
- 7 historical society
- 8 Mineral Springs Farm